

ART Stage

- Altman Single Cell

19°

26°

14" Scoop

8" Fresnel

6" Fresnel

C Zoom

S4 Zoom
- Colortran Cyc

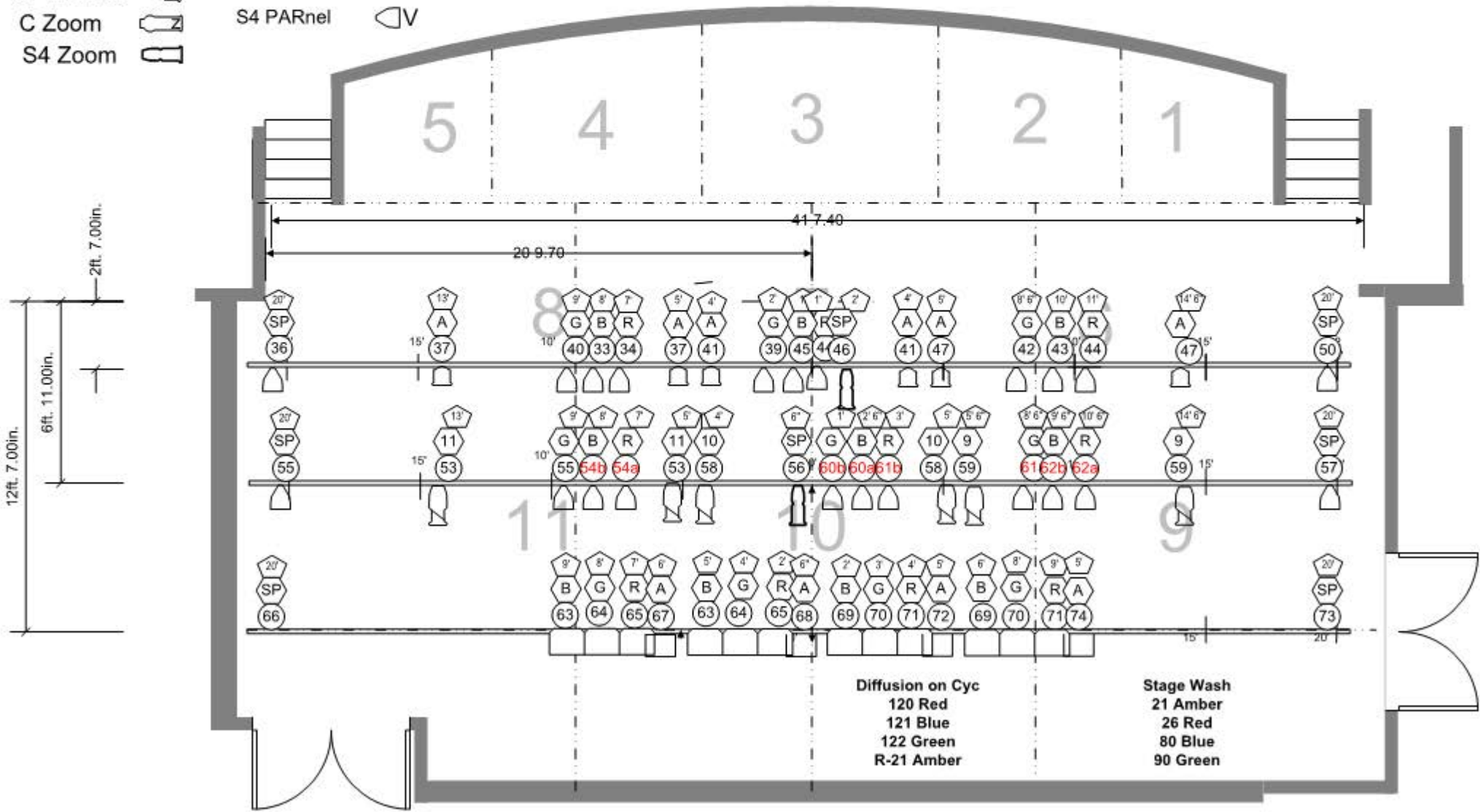
Dimmer #

Position

Focus

S4 PAR

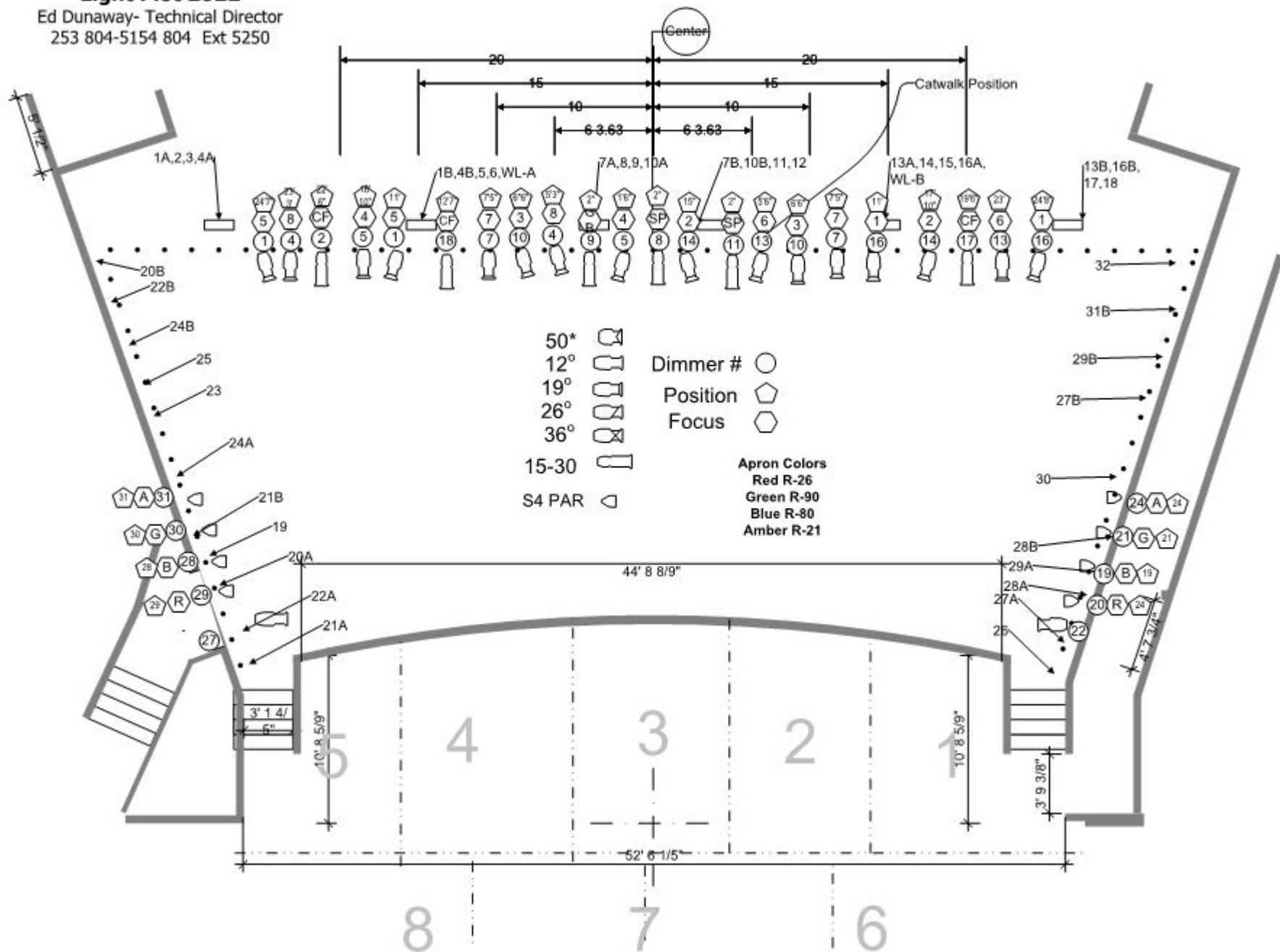
S4 PARnel

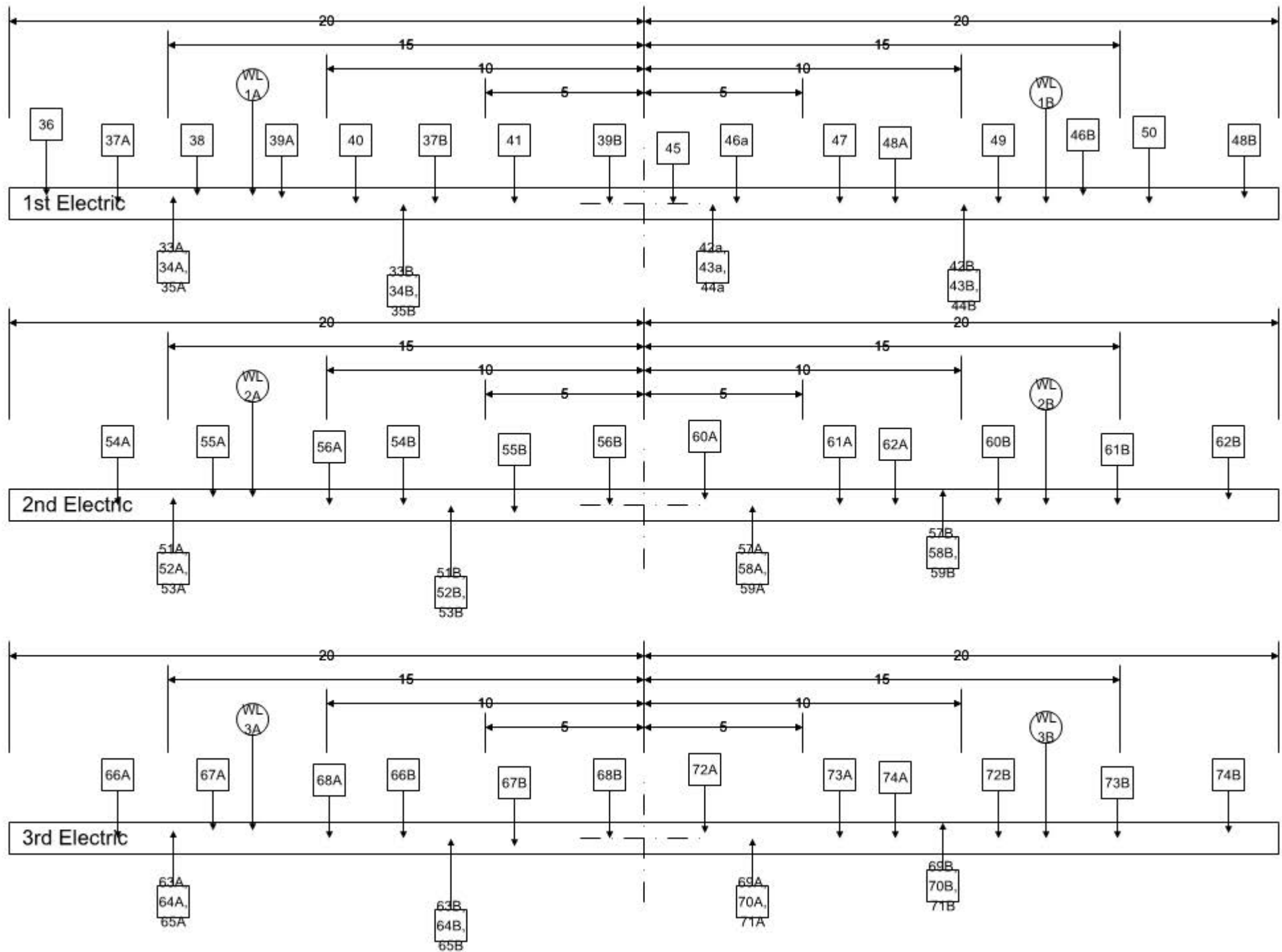


Auburn Riverside Theater

Light Plot 2022

Ed Dunaway- Technical Director
253 804-5154 804 Ext 5250





ART Stage Circuits